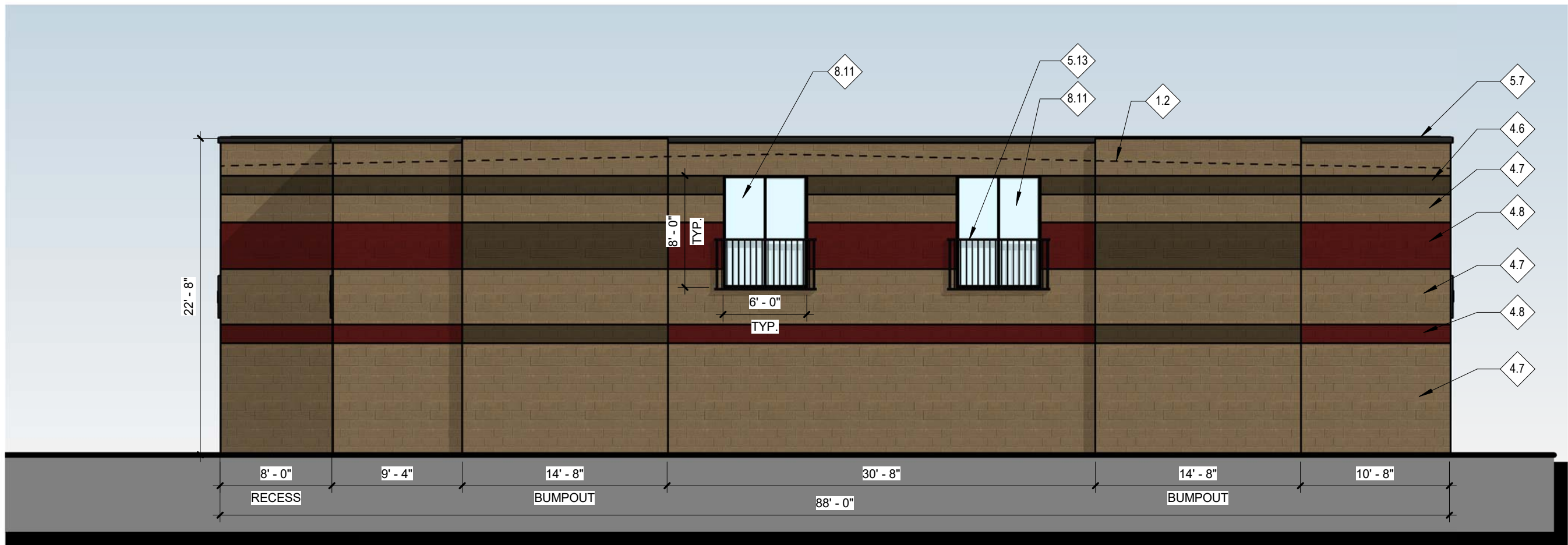
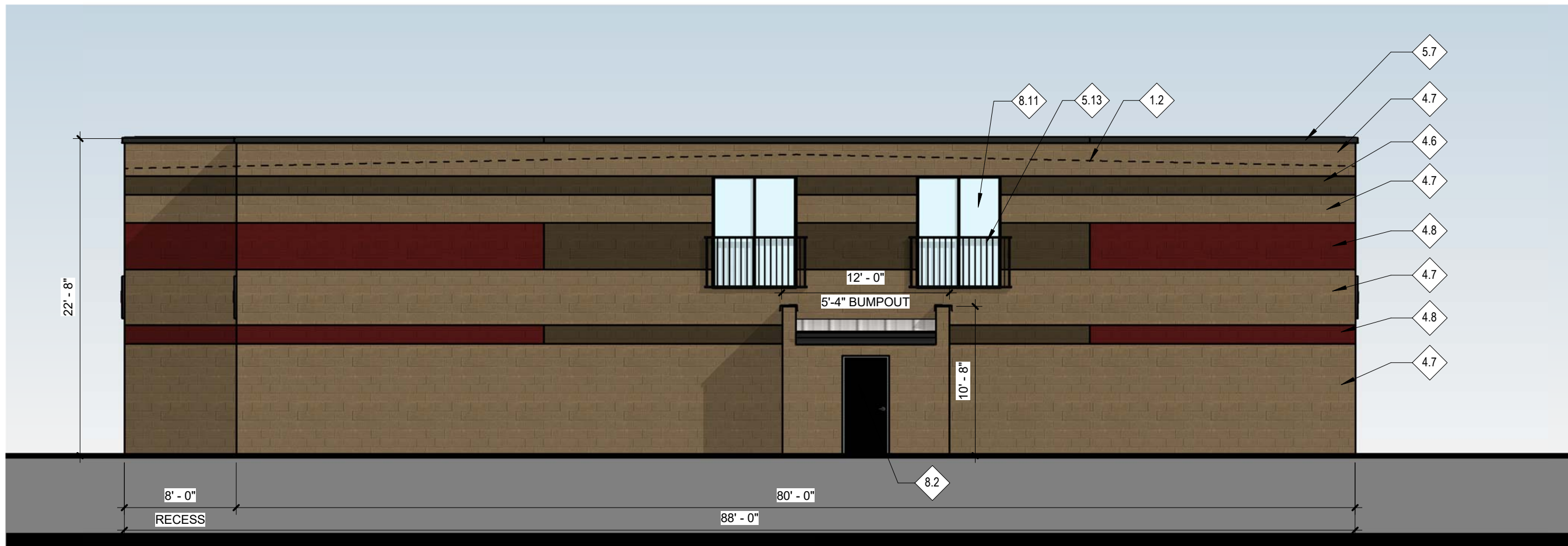


GOLDEN OVERLOOK
SITE DEVELOPMENT PLAN

A PARCEL OF LAND LOCATED IN THE SOUTHEAST QUARTER OF SECTION 11,
TOWNSHIP 4 SOUTH, RANGE 70 WEST OF THE 6TH PRINCIPAL MERIDIAN
CITY OF GOLDEN, COUNTY OF JEFFERSON, STATE OF COLORADO.



1 SOUTH ELEVATION - BUILDING F
1/8" = 1'-0"



2 NORTH ELEVATION - BUILDING F
1/8" = 1'-0"



3 EAST ELEVATION - BUILDING F
1/8" = 1'-0"



4 WEST ELEVATION - BUILDING F
1/8" = 1'-0"

Keynote Legend		
Key Value	Keynote Text	
1.2	LINE OF ROOF BEYOND	
1.9	UNIT IDENTIFICATION, FOR ILLUSTRATIVE PURPOSES ONLY	
4.1	CMU; BASALITE - LIGHTWEIGHT, GROUND FACE BLOCK, STACKED BOND - COLOR: DARK BROWN	
4.2	STONE VENEER; CORONADO, INDUSTRIAL LEDGE - COLOR: SHALE GREY	
4.6	CMU; BASALITE - LIGHTWEIGHT, GROUND FACE, RUNNING BOND - COLOR: RESORT TAN, SW 7550	
4.7	CMU; BASALITE - LIGHTWEIGHT, GROUND-FACE, RUNNING BOND - COLOR: OUTERBANKS, SW 7534	
4.8	CMU; BASALITE - LIGHTWEIGHT, GROUND FACE, RUNNING BOND - COLOR: FIRED BRICK, SW 6335	
5.1	METAL PANEL - STK2000 STRUKTUROC TEXTURED (STUCCO FINISH) - COLOR: SURREY BEIGE	
5.5	FLAT METAL WALL PANEL - COLOR: BURNISHED SLATE	
5.7	22 GA. PRE-FINISHED METAL PARAPET CAP - COLOR: DARK BRONZE	
5.8	DESIGNWALL 1000 FASCIA PANEL BY KINGSPAN, COLOR: DARK BRONZE	
5.10	METAL FASCIA, BURNISHED SLATE	
5.11	MBCI NUWALL METAL PANEL, COLOR: SLATE GRAY	
5.13	JULIET GUARD RAIL, DARK BRONZE POWDER COAT FINISH	
7.2	PRE-FINISHED GUTTER AND DOWNSPOUT - COLOR: BURNISHED SLATE, RE: PEMB, ROOF PLAN & CIVIL	
7.8	STANDING SEAM METAL ROOF	
7.10	ULTRA DEK, 24 GA, 24" WIDE, DARK BRONZE ROOF PANEL, RE: PEMB	
8.1	ALUMINUM CLAD LOW-E WINDOW FRAMES / STOREFRONT ENTRY DOORS W/ A MAXIMUM GLASS REFLECTIVE FACTOR OF .24 - COLOR: DARK BRONZE	
8.2	HOLLOW METAL DOOR AND FRAME, PAINT TO MATCH BURNISHED SLATE	
8.4	COILING DOOR BY DOOR COMPANY - COLOR: SANDSTONE	
8.9	DURA-GLIDE 2000 SINGLE SLIDE, 1" INSULATED LOW E GLAZING	
8.10	OVERHEAD SECTIONAL DOOR W/ GLAZING	
8.11	SLIDING GLASS DOOR, COLOR TO MATCH DARK BRONZE	
26.2	PHOTOVOLTAIC PANEL	
32.8	STEEL BOLLARD, PAINTED, HIGH VISIBILITY YELLOW	



MATERIAL LEGEND - PERSONAL WAREHOUSE

NOTE: ALL MECHANICAL
EQUIPMENT TO BE INTERNAL, NO
ROOF TOP UNITS

GOLDEN OVERLOOK
SITE DEVELOPMENT PLAN
GOLDEN, COLORADO

OWNER:
SKITZO 17101, LLC
4651 TABOR STREET
WHEAT RIDGE, CO 80033
303-422-2999

DATE:
04/10/20 SDP 01
06/05/20 SDP 02

SHEET TITLE:
PERSONAL
WAREHOUSE BUILDING
F ELEVATIONS

A PARCEL OF LAND LOCATED IN THE SOUTHEAST QUARTER OF SECTION 11,
TOWNSHIP 4 SOUTH, RANGE 70 WEST OF THE 6TH PRINCIPAL MERIDIAN
CITY OF GOLDEN, COUNTY OF JEFFERSON, STATE OF COLORADO.



GOLDEN OVERLOOK

SITE DEVELOPMENT PLAN

GOLDEN, COLORADO

DATE:
04/10/20 SDP 01
06/05/20 SDP 02

34 OF 39



3 EAST ELEVATION - BUILDING 1



Hauser Architects, P.C. 6/5/2020 2:21:40 PM